

Mountain Motif Xeriscape



This front yard gets creative with landscaping without bluegrass. The dry streambed and various mulch areas help break up large spaces and create areas to leave unplanted and other areas to plant. The plants in this landscape are trees, shrubs and ornamental grasses that need very little maintenance and only a few flowering perennials that need a little more maintenance. This yard creates a unified look by repeating mulch and plants on both sides of the driveway and the parkway, giving this mountain xeriscape a complete look.

Some plants found in this landscape are:



Shenandoah Switchgrass



Blue Chip Creeping Juniper



Russian Sage



Goblin Blanket Flower



Bluebeard





Xeriscape is not zero-escape. Even if you'd like to use rock mulch for your yard, there are plenty of plants that grow well with the extra heat. Rock mulch can be great for areas with high winds where wood mulch may not stay put. Rock is used throughout this landscape, and is planted with trees, shrubs and perennials that can tolerate the extra heat. This yard has a slight slope, so a small rock wall was installed in order to flatten out the planting area near the front door. This also helps add dimension and break up the large space.

Some plants found in this landscape are:



Spanish Gold Broom



Munstead English Lavender



Mugo Pine



Stella D'Oro Daylily



Green Ash



Feather Reed Grass





Shrubs and grasses can be a great way to landscape for lower maintenance and water savings. Evergreen shrubs in particular need little to no maintenance, and ornamental grasses need to be cut to the ground only once in early spring. This home features shrubs, grasses and a few flowering perennials to add a pop of color to this small front yard. Not only are these plants low maintenance, but they have great fall color and structure during the winter. Because drip irrigation and mulch are used, weeds are less of a problem and this yard may be enjoyed with less weed pulling.

Some plants found in this landscape are:



Dwarf Globe Blue Spruce



Crimson Pygmy Barberry



Blue Oat Grass



Anthony Waterer Spirea



Himalayan Border Jewel



Munstead English Lavender





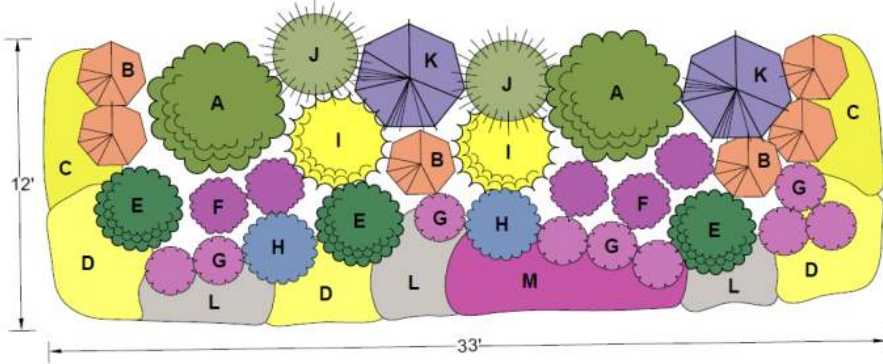
Plant Select®
plant smarter

XERISCAPE DESIGN SOLUTIONS Lauren Springer Ogden Collection:

PRACTICAL AND INSPIRING DESIGNS WITH REGIONAL RESONANCE USING PLANT SELECT® PLANTS, BY ONE OF AMERICA'S BEST-KNOWN HORTICULTURISTS AND GARDEN DESIGNERS.

CHAPARRAL/XERIC MIXED BORDER

This shrubby garden has a natural feel to it, blending native and adapted plants in a casual but full manner. Foliages are attractive and mostly fine-textured, with several evergreen plants to add winter interest. Long-bloomers add color from late spring to fall. Many of the flowers attract butterflies, hummingbirds, and bees. For added late winter and early spring color, consider adding the bulbs listed below amid the lower-growing plants in the foreground of the planting. To add interest the first couple of years in the area where the shrubs are filling in, consider planting the short-lived plants listed for that purpose. This design can be used as a perimeter planting: just repeat to the length needed. It can also be widened into a broader bed with the larger plants in the center or spine by planting its mirror image on the other side. This garden needs full sun and dry conditions, and will thrive in a lean, unamended soil.



PLANT LIST:

Plant Select® plants are in bold>

- A. Apache Plume -or- Fernbush (2)
- B. Sunset Hyssop -or- Sonoran Sunset® Hyssop (6)
- C. Kannah Creek® Buckwheat -or- Snow Mesa Buckwheat (12)
- D. 'Shimmer' Evening Primrose (12) -or- Silver Blade® Evening Primrose (9)
- E. Panchito Manzanita -or- Pawnee Buttes Sand Cherry (3)
- F. Mojave Sage -or- Blue Flame Hyssop (5)
- G. Red Rocks® Penstemon -or- Greek Valerian (9)
- H. Big Catmint (2)
- I. Spanish Gold® Broom -or- Lydian Broom (2)
- J. Giant Sacaton -or- Heavy Metal Switchgrass (2)
- K. Russian Sage -or- Blue Mist Spirea (2)
- L. Sea Foam Artemisia (6) -or- Partridge Feather (16)
- M. Winecups (3) -or- Table Mountain® Ice Plant (15)

Additional Plants:

- Corsican Violet (12) randomly in front 2' of bed to self-sow year after year

If desired, fill in around shrubs with the following short-lived plants while the shrubs grow to size:

- Red Feathers (9)
- Prairie Jewel® penstemon (9)
- Grand Mesa penstemon (9)
- Moon Carrot (9)

Bulbs:

- Blue Snow Iris (50)
- Deep Blue Grape Hyacinth (50)
- Species Tulip 'Bright Gem' or 'Bronze Charm' (50)
- Lipstick Tulip 'Tinka' or 'Cynthia' (50)

Find more designs and inspiration at plantsselect.org!



Designer Lauren Springer Ogden

Lauren Springer Ogden designs both public and private gardens. Her book *The Undaunted Garden* is the mountain region's all-time best-selling garden book. She also coauthored the award-winning *Plant-Driven Design* and *Passionate Gardening*. She has also introduced numerous plants to the nursery trade, and Lauren and her work have been featured in national and international publications, and on radio and television.

www.plantdrivendesign.com

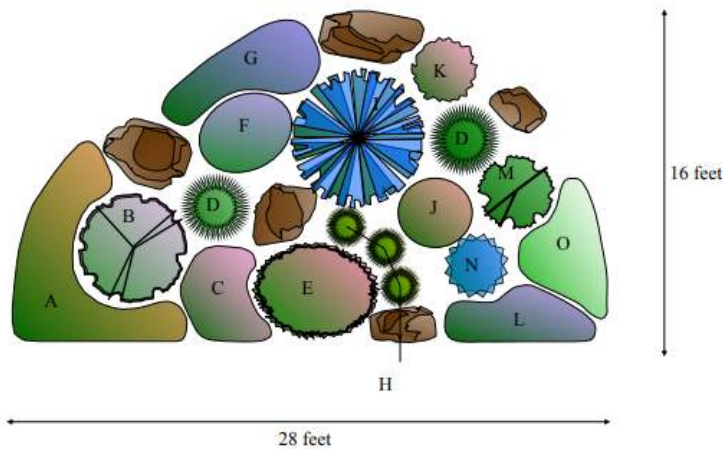


Plant Select®
plant smarter

XERISCAPE DESIGN SOLUTIONS

ROCK GARDEN

This raised xeriscape garden is in full sun and visible from all sides. The boulders, native grasses and "evergreen" plants, Bluestem Joint Fir, Mock Bearberry and Parry's Century Plant, give this garden plenty of winter texture and interest. A native Cowboy's Delight (*Sphaeralcea coccinea*) meanders thru the garden. Spring bulbs of Tete A Tete Daffodils, Crocus, and small species tulips add extra bloom time, and TABLE MOUNTAIN® ice plant will bloom in November on our warm 'Indian Summer' days.



PLANT LIST:

Plant Select® plants are in bold

- A. **ORANGE CARPET®** Hummingbird Trumpet
-or- 'Angelina' Sedum
- B. **PAWNEE BUTTES®** Sand Cherry -or- 'Powis Castle' Artemisia
- C. **TABLE MOUNTAIN®** Ice Plant -or- **MESA VERDE®** Ice Plant
- D. Stipa Feather Grass -or- Blue Oat Grass
- E. 'Winter Glow' Prickly Pear Cactus -or- Colorado hedgehog cactus
- F. Variegated Iris -or- German Iris
- G. **Corsican Violet -or- COLORADO GOLD®** Gazania
- H. Colorado Blue Grama Grass -or- 'Boulder Blue' Blue Fescue
- I. **Bluestem Joint Fir -or- SPANISH GOLD®** Broom
- J. **RED ROCKS®** Penstemon -or- Rocky Mountain Penstemon
- K. **MONGOLIAN BELLS®** Clematis -or- Furman's Red Sage
- L. Turkish Veronica -or- **CRYSTAL RIVER®** Veronica
- M. **Mock Bearberry** Manzanita -or- Crimson Pygmy Barberry
- N. Parry's Century Plant -or- Pale-leaf Yucca
- O. Lamb's Ear 'Helene von Stein' (Big Ears) -or- Sea Foam Artemisia



Shalene Hiller received her bachelor degree from Colorado State University Landscape Design Program. She has worked all facets of the Industry from design to perennial production to maintenance. She is currently Horticultural Specialist for the City of Westminster. You can see her gardens at Legacy Ridge and The Heritage at Westmoor Golf Courses

Find more designs and inspiration at plantselect.org!

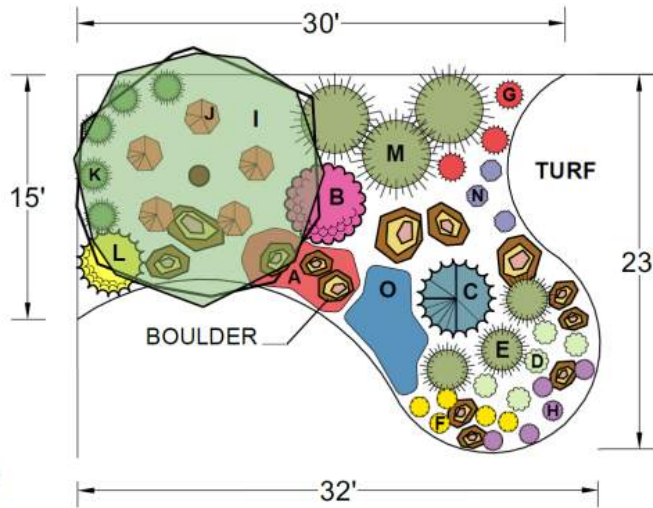


Plant Select®
plant smarter

XERISCAPE DESIGN SOLUTIONS

FOUR SEASON SENSATION

This garden represents a partial conversion of lawn to garden. Reshaping the existing lawn using a curvilinear approach adds flow and movement. Ornamental and coniferous trees provide height, shade and winter interest without interfering excessively with the views. This once water-hogging space is now a lush garden with plants that provide four season beauty, color and interest; thrive in low-water, clay soil and full sun conditions; and attract butterflies and hummingbirds. Drip irrigation and organic mulch, along with proper plant selection, aid in long-term water conservation.



PLANT LIST:

All plants are Plant Select® plants

- A. Fire Spinner™ Ice Plant -or- Lavender Ice Ice Plant (7)
- B. Ruby Voodoo Rose -or- Redleaf Rose (1)
- C. Weeping White Spruce (1)
- D. Avalanche White Sun Daisy -or- Golden Storksbill (5)
- E. Blonde Ambition Blue Grama Grass -or- Korean Feather Reed Grass (3)
- F. Colorado Gold® gazania -or- Chocolate Flower (5)
- G. Red Birds in a Tree -or- Bridges' Penstemon (3)
- H. Valley Lavender® Plains Verbena -or- Winecups (5)
- I. Russian Hawthorn -or- Hot Wings® Tatarian Maple (1)
- J. Orange Carpet® Hummingbird Trumpet (5)
- K. Korean Feather Reed Grass (5)
- L. Spanish Gold Broom -or- Baby Blue Rabbitbrush (1)
- M. Giant Sacaton (3)
- N. Little Trudy® Catmint -or- Shadow Mountain® Penstemon (3)
- O. Crystal River® Veronica -or- Turkish Veronica (5)



Designer Tanya Fisher

President of Colorado Vista Landscape Design, Inc. since 2003, Tanya Fisher provides high quality and sustainable landscape design plans and horticulture consulting for residential, community and commercial landscapes in the northern Colorado region.

ColoradoVista@comcast.net www.ColoradoVista.com Windsor, CO (970) 231-3088

Find more and inspiration
at plantselect.org!

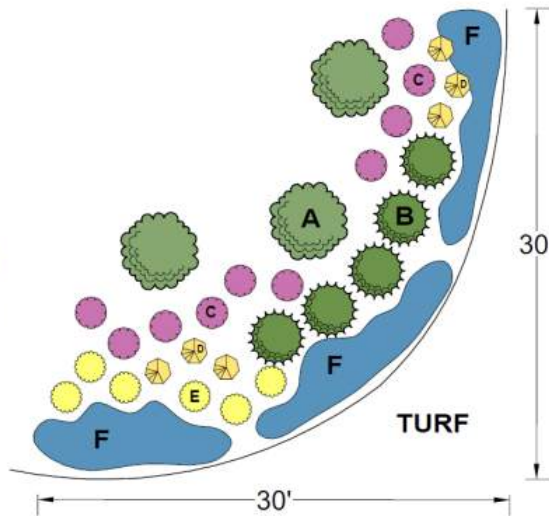


Plant Select[®]
plant smarter

XERISCAPE DESIGN SOLUTIONS

DRY SHADE

Low-water gardens for shade are a bit more challenging to design than their sunnier counterparts because many plants that grow naturally in shady spots are found in woodlands with regular moisture. This garden incorporates western natives and plants from around the world that are naturally adapted to dry shade. Plant the veronicas in drifts along the front of the border to fill areas between the perennial flowers and lawn area. These same plants can be combined in smaller quantities for smaller areas.



PLANT LIST:

Plant Select[®] plants are in bold

A. Cheyenne[®] Mock Orange -or- Waxflower (3)

B. Mountain Lover (5)

C. Cashmere Sage -or- Plumbago (10)

D. Denver Gold[®] Columbine -or- Perennial Foxglove (6)

E. Variegated Yellow Archangel (6)

F. Crystal River[®] Veronica -or- Woolly Veronica (50+)

Find more designs and inspiration at plantselect.org



Designer Tonya Dunn

Gardenthyme, Inc. is a dedicated team of caring professionals in northern Colorado providing complete garden & grounds landscaping services with an emphasis on horticulture. We have established the regional standard of excellence for landscape gardening, defined unsurpassed customer service, and recognize that client loyalty is a testimony to our consistent performance.

www.gardenthyme.net

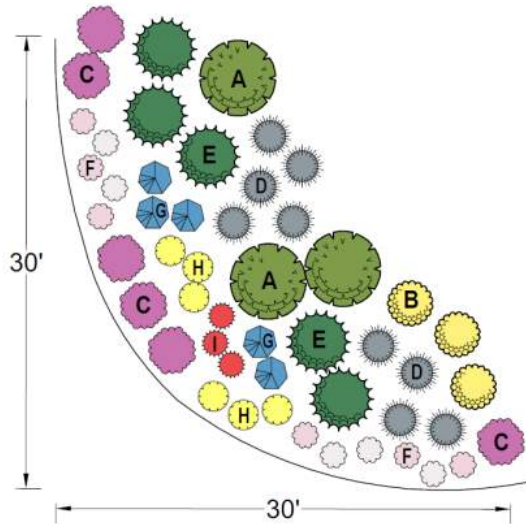
info@gardenthyme.net

Fort Collins, CO (970) 416-9000

COLORADO WATERSMART NATIVE BORDER

This shrub and perennial border features species and selections of native plants from the drier regions of Colorado. The plants chosen will provide interest in all seasons and evoke the natural beauty of our prairie and foothill habitats.

The water needs of the plants in this border are very low and once established irrigation would only be advised when extended periods of dry and warm weather occur. The design layout can be repeated to cover longer bed areas.



PLANT LIST:

Plant Select® plants are in bold

- A. Apache Plume -or- Tall Blue Rabbitbrush (3)
- B. Baby Blue Rabbitbrush -or- Dwarf Leadplant (3)
- C. Winecups -or- Colorado Four O'Clock (5)
- D. Blonde Ambition Blue Grama Grass -or- The Blues Little Bluestem Grass (9)
- E. Panchito Manzanita -or- Soapweed Yucca (5)
- F. Prairie Lode Sundrops -or- Tufted Evening Primrose (11)
- G. Grand Mesa Penstemon -or- Rocky Mountain Penstemon (5)
- H. Kannah Creek Buckwheat -or- Prairie Coneflower (6)
- I. Bridges' Penstemon -or- Plains Gayfeather (3)



Designer Loretta Mannix

Northern Front Range horticulturist and landscape designer Loretta Mannix specializes in designing water-wise landscapes. She owns and operates The Horticulture Consultant and offers services including landscape design, horticulture consulting and plant problem diagnosis.

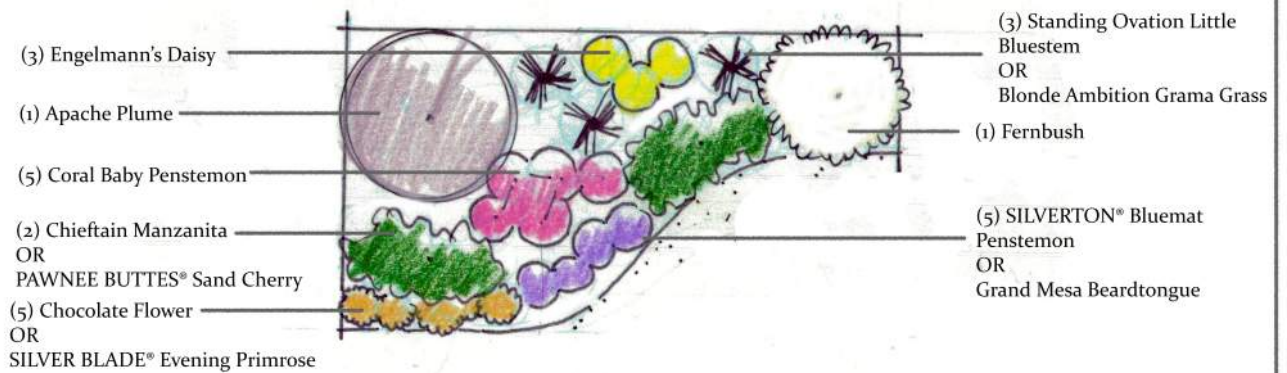
www.thehortconsult.com

Find more designs and inspiration at plantselect.org!



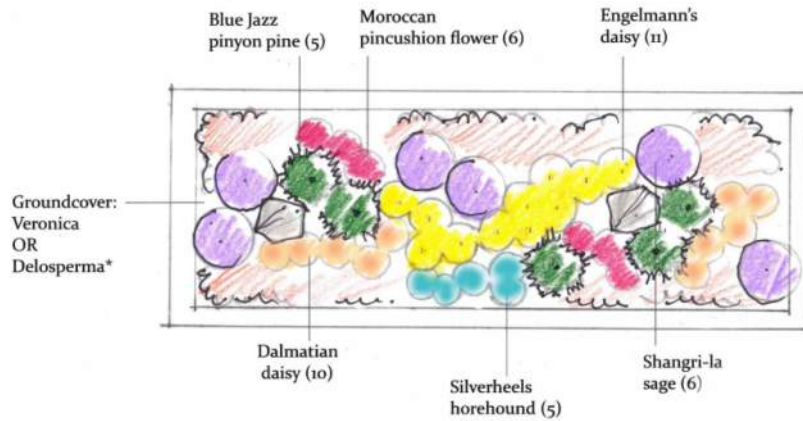
DENVER BOTANIC GARDENS

Designed by: Annie Barrow
 Manager, Horticulture Outreach Programs
 annie.barrow@botanicgardens.org



NATIVE PLANTING DESIGN

Exposure: Full Sun
 SCALE 1/4"=1'



*Mix of Veronica CRYSTAL RIVERS™ & SNOWMASS® or Delosperma Granita® Raspberry & Granita® Orange

RIGHT OF WAY PLANTING DESIGN

Scale 1/4"=1'
Exposure: Full to part sun

RIGHT OF WAY PLANTING DESIGN 24' X 8'

This low maintenance, full sun design is a display of colorful steppe region plants that embodies effortless natural beauty.

PLANT LIST:

Blue Jazz dwarf pinyon pine (5)

Moroccan pincushion flower (6)

Engelmann's daisy (11)

Groundcovers in mass, CRYSTAL RIVER® & SNOWMASS® or GRANITA® Raspberry or Orange ice plants (2 flats)

Dalmatian daisy (10)

Silverheels horehound (5)

Shangri-la sage (6)

Hardscape use of 2-5 stones or a broadleaf evergreen such as Panchito manzanita

Visit www.PlantSelect.org/where-to-buy/ to source Plant Select plants or email Director@PlantSelect.org with questions.